

AP Drawing Portfolio

Galadra Plummer

2021



Image 1

Sustained Investigation

Height: 8 inches

Width: 8 inches

Material(s): Black watercolor ink, gold leaf paint, gold pen, white gel pen, green Copic markers, paintbrushes

Process(es): painted gold and black to show contrast with sprouts to represent young life starting to grow



Image 2

Sustained Investigation

Height: 8 inches

Width: 6 inches

Material(s): Purple Micron pen, grey and purple Touchnew markers, white gel pen to highlight.

Process(es): gemstones to show life within the ground with bright and vibrant purples to corrupt the grey skull

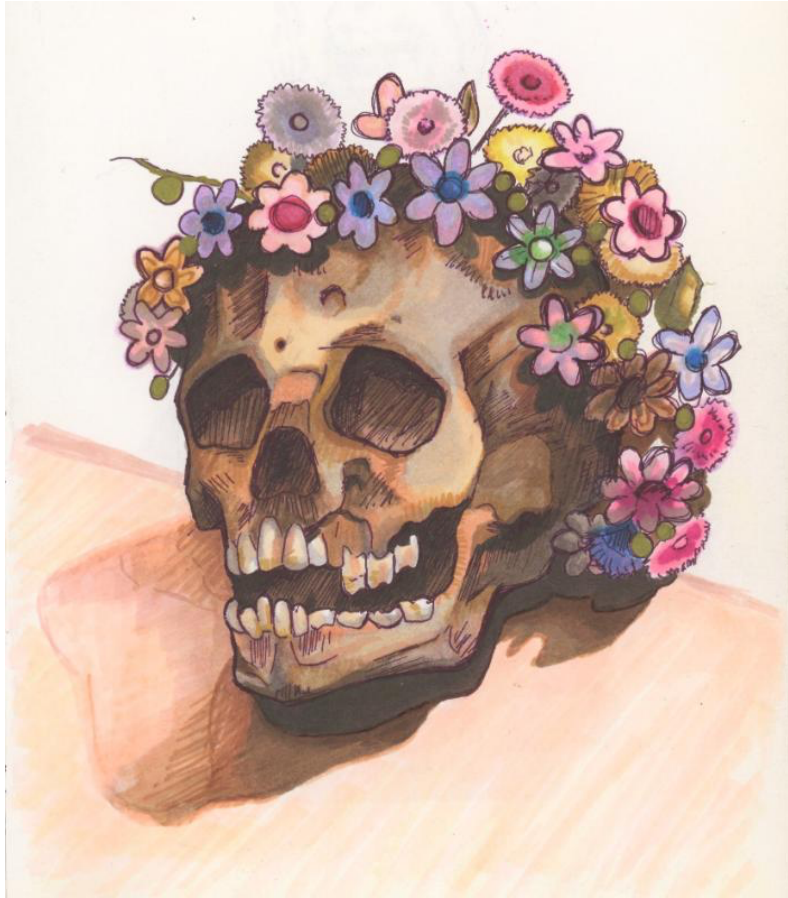


Image 3

Sustained Investigation

Height: 8 inches

Width: 6 inches

Material(s): Brown Micron pens for the linework, gold Sharpie, gold leaf, and Touchnew markers to color

Process(es): hatching and meticulous linework to create imperfections and depth, add contrast of warm/cool tones



Image 4

Sustained Investigation

Height: 8 inches

Width: 8 inches

Material(s): Micron pens, gold leaf paint, a gold ink pen, Touchnew markers, white gel pen for highlights

Process(es): colored with markers, added gold blood and bright flowers to show hopeful life growing from death



Image 5

Sustained Investigation

Height: NA

Width: NA

Material(s): deer skull, synthetic flowers, camera

Process(es): using deer skull and flowers as a reference, altering light and space to provide texture and depth



Image 6

Sustained Investigation

Height: 20 inches

Width: 26 inches

Material(s): Prismacolor colored pencils, light grey Canson textured paper

Process(es): used hatching with darker shades of brown to create detail/shading and warm floral tones of comfort

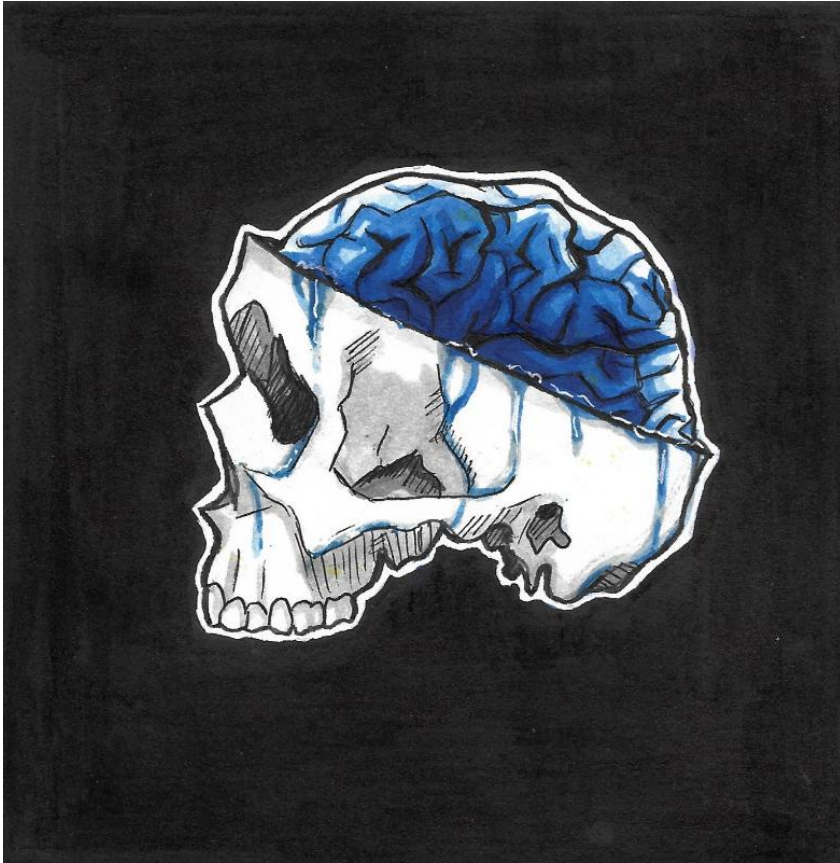


Image 7

Sustained Investigation

Height: 8 inches

Width: 8 inches

Material(s): Black sharpie, black Micron pens, blue and grey Copic markers, and white gel pen

Process(es): colored unnatural blue brain to invoke eeriness and "tears" dripping to shift to self-destruction

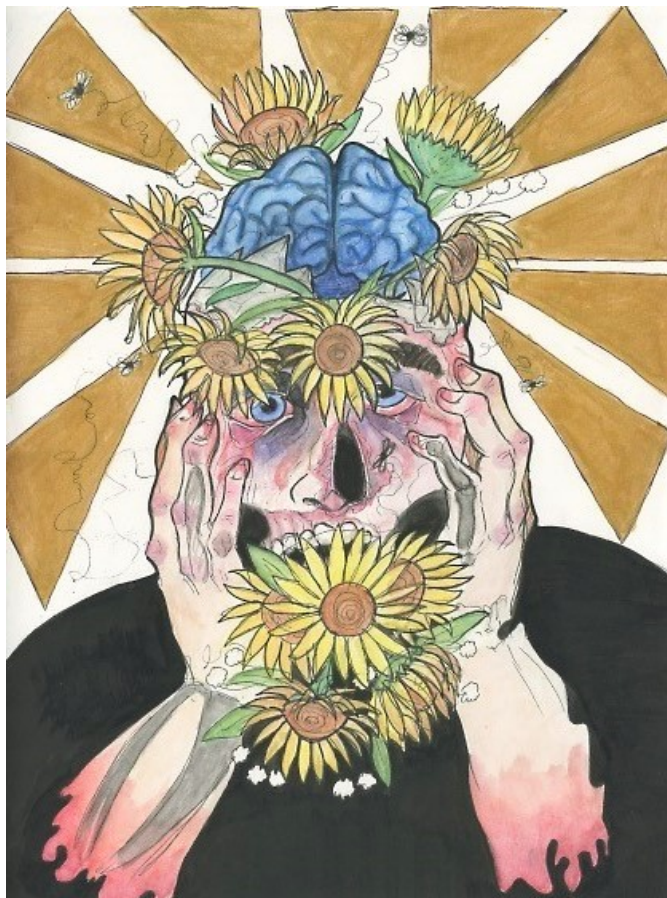


Image 8

Sustained Investigation

Height: 12 inches

Width: 9 inches

Material(s): watercolor pencils, black watercolor ink, Micron pens, gold leaf paint, paintbrushes

Process(es): revise work 10 by keeping blue brain and skull, adding a decrepit man and watercolor, ink, and gold

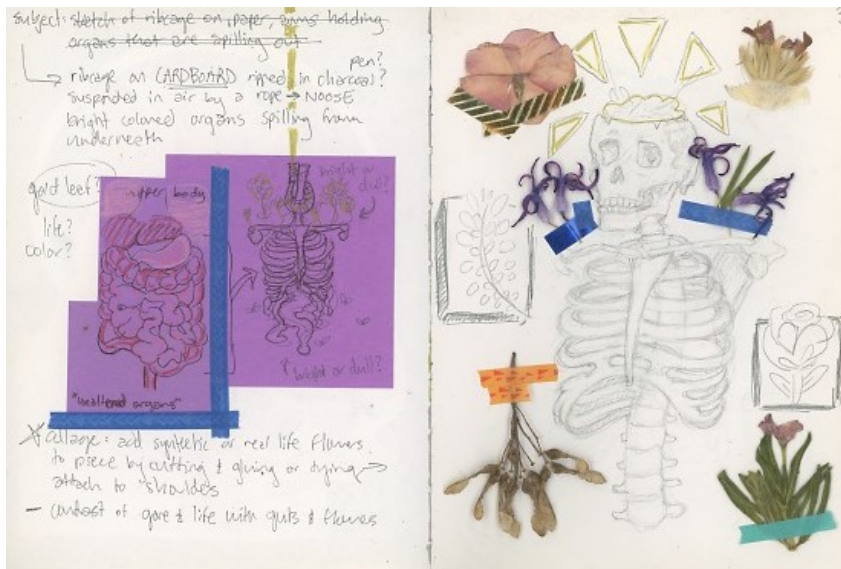


Image 9

Sustained Investigation

Height: 8 inches

Width: 11.5 inches

Material(s): sticky notes, pencil, tape, gold, black, and grey pens, colored pencils, pressed flowers and plants

Process(es): writing ideas and practicing sketching a skeleton torso and roses, scrapbooking flowers



Image 10

Sustained Investigation

Height: NA

Width: NA

Material(s): fake human ribcage, spine, and pelvis, synthetic flowers/leaves, red wire and red ribbons, camera

Process(es): tying red ribbons to represent internal organs, placing bright flowers on top and use wire as a noose

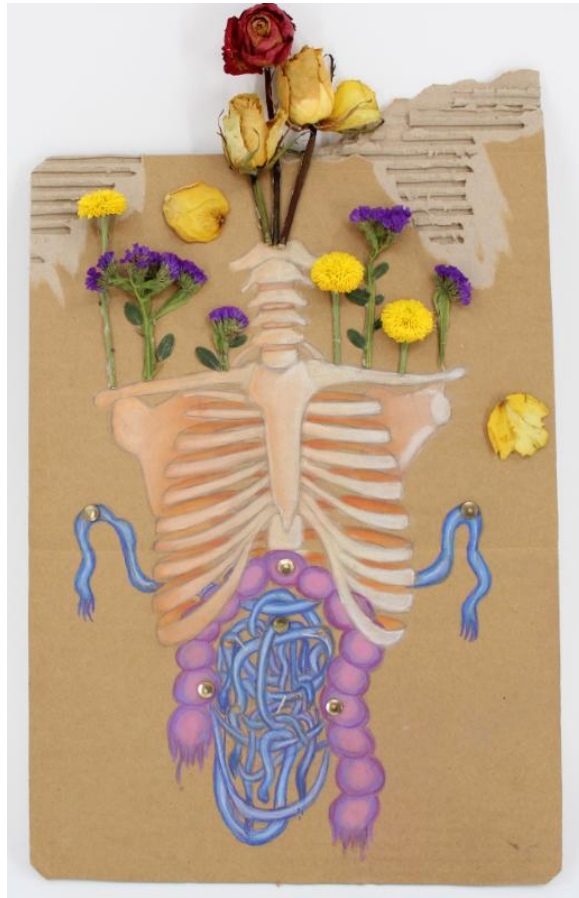


Image 11

Sustained Investigation

Height: 21 inches

Width: 13 inches

Material(s): cardboard, hard pastels, Prismacolor colored pencils, dried flower, gold thumbtacks, hot glue

Process(es): color ribcage in warm pastels and guts in cool-toned pencils for contrast, cut and glued flowers

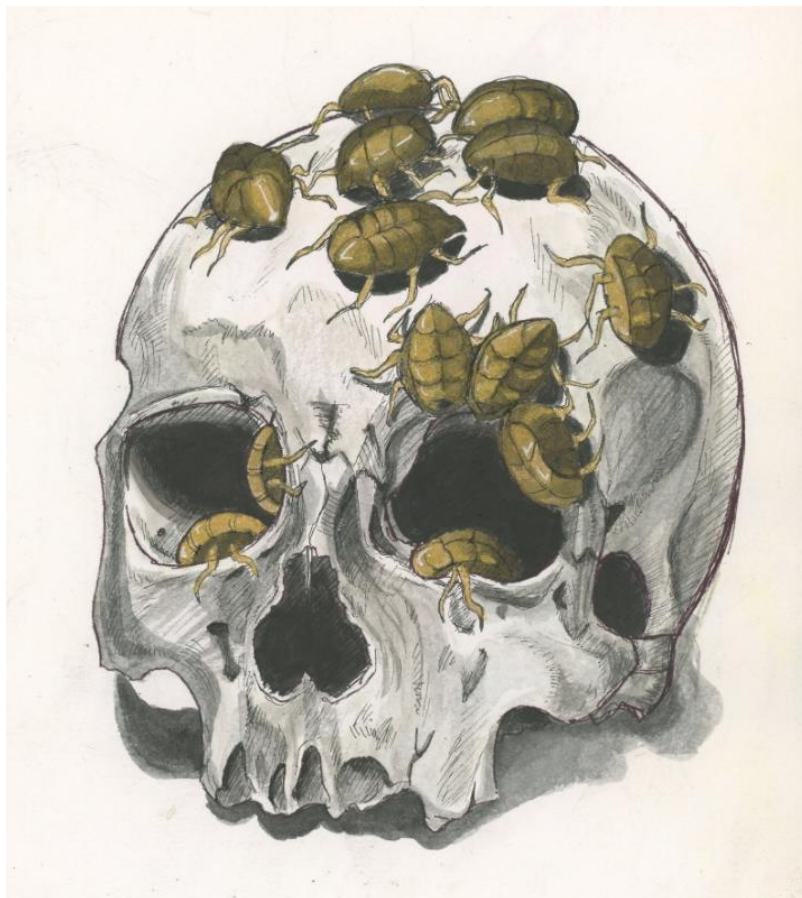


Image 12

Sustained Investigation

Height: 8 inches

Width: 6 inches

Material(s): Black Micron pens, gold leaf paint, black watercolor ink, white gel pen

Process(es): details in pen, shadows made w/ink to demonstrate hollowness, beetles made with mixed gold and ink



Image 13

Sustained Investigation

Height: 8 inches

Width: 6 inches

Material(s): Micron pens, black watercolor ink, grey Copic markers

Process(es):
hatching/crosshatching w/ small pens for detail and mushrooms with greyscale color to sap away life



Image 14

Sustained Investigation

Height: 8 inches

Width: 6 inches

Material(s): Micron pens, black watercolor ink, grey Copic markers

Process(es):
hatching/crosshatching w/ small pens for detail and mushrooms with greyscale color to sap away life

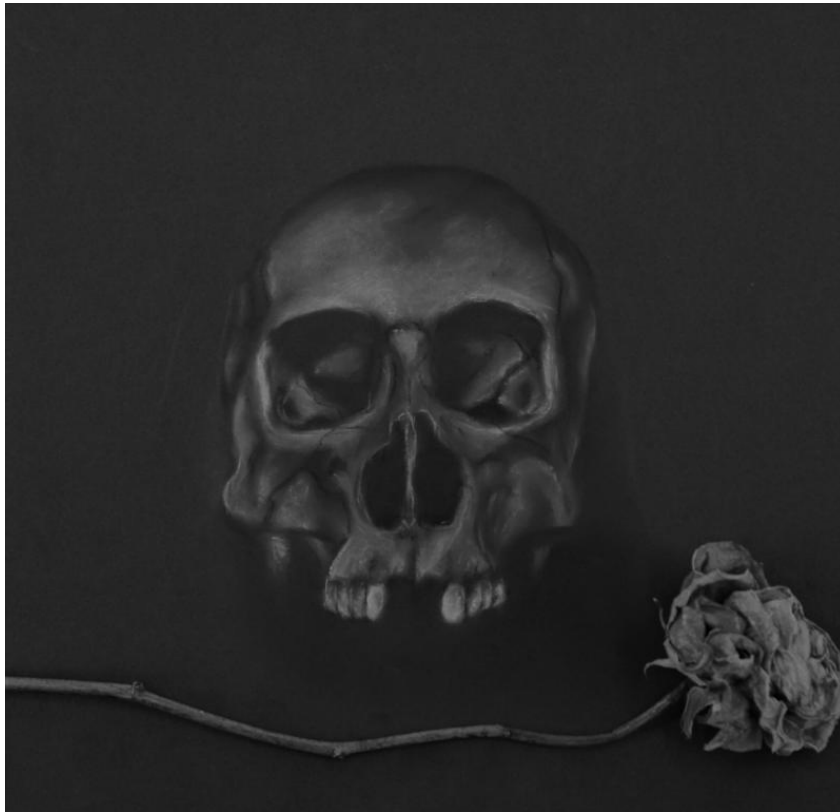


Image 15

Sustained Investigation

Height: 12 inches

Width: 14 inches

Material(s): black charcoal, white chalk, black textured paper, real rose

Process(es): show the finality of loss of life with the lack of color, placing rose to juxtapose life and death

Written Evidence

Sustained Investigation

Identify the question(s) or inquiry that guided your sustained investigation.

Describe how your sustained investigation shows evidence of practice, experimentation, and revision guided by your question(s) or inquiry.

Response:

how do I demonstrate life blossoming from death?
how does the passage of time corrupt life?
what is the interconnectedness of nature?

A concept that fascinates and frightens me is the circle of life; the constant grip of death on every being from birth and the life that blossoms from their extermination. My art represents the connection between life, nature, and death to explain what is left behind after life is whisked away. I illustrate a variety of skulls, juxtaposing grey and black tones with gold highlights (work 1) or dull tones next to vibrant ones to elaborate this connection (work 3). A motif that connects each piece is the use of flowers or gold leaf to resemble life growing on dead matter. I have undergone the revision of my artistic process expanding my materials, using more complex references, and practicing continuity of my details in line from wholesome to grotesque. The progression of each piece begins with bright colors in works of joy to the loss of color in gore, decay, and horror to provoke discomfort (works 11 and 12). The final pieces are of insanity and corruption to imply that death is inevitable, and we will all be consumed by nature (works 13-15).



Work 1

Selected Works

Height: 37 inches

Width: 20 inches

Idea(s): inspired by bright neon lights, floral design, and colorful scenery of nighttime urban Japan

Material(s): White cotton pants, acrylic paint, spray paint, large and small brushes

Process(es): used spray paint as base, layered coats of acrylic paint on pants to create bright size and detail



Work 2

Selected Works

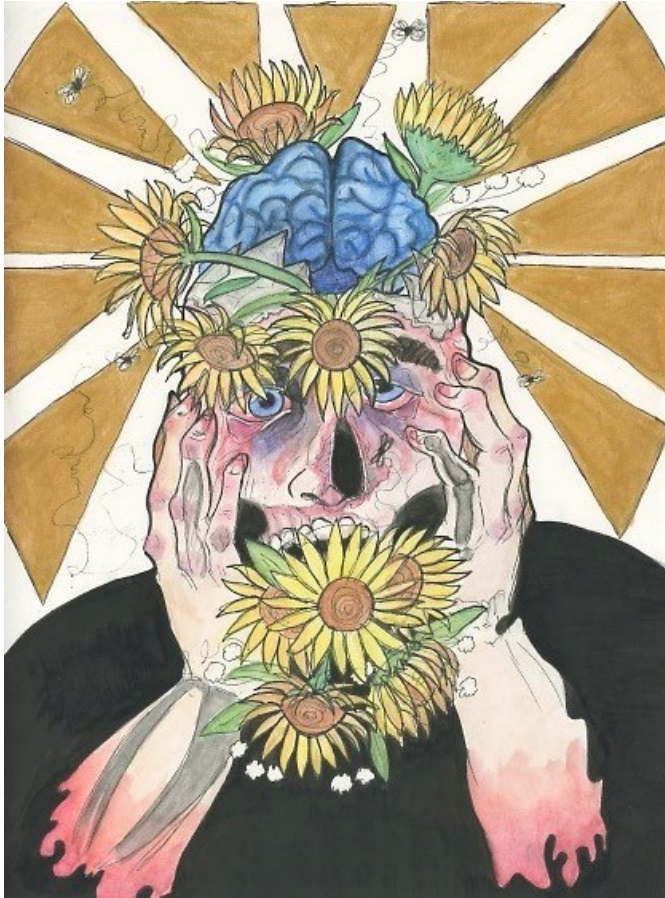
Height: 21 inches

Width: 13 inches

Idea(s): use real flowers to combine reality to fiction, cool vs warm colors for contrast with unnatural guts

Material(s): cardboard, hard pastels, Prismacolor colored pencils, dried flower, gold thumbtacks, hot glue

Process(es): color ribcage in warm pastels and guts in cool-toned pencils to feel eerie, cut and glued flowers



Work 3

Selected Works

Height: 12 inches

Width: 8 inches

Idea(s): illustrate insanity with a rotting human and head torn apart with bright sunflowers to sap away life

Material(s): pencil, Micron pens, watercolor pencils, black watercolor ink, gold foil paint

Process(es): outlined in rapid pen strokes, watercolor to create effect of fading away, gold/flower to bring hope



Work 4

Selected Works

Height: 20 inches

Width: 26 inches

Idea(s): use realism to suggest the permanence of death in wildlife and flowers to show life growing on death

Material(s): Prismacolor colored pencils, light grey Canson textured paper

Process(es): used hatching with darker shades of brown to create detail/shading and warm floral tones of comfort



Work 5

Selected Works

Height: 8 inches

Width: 6 inches

Idea(s): show a petrified beautiful woman in overwhelming death with invincible mushrooms and lack of color

Material(s): Micron pens, grey Copic markers, black watercolor ink

Process(es): hatching/crosshatching w/ small pens for detail and mushrooms with greyscale color to sap away life